



# **ERMES Regional Geoportal**

## **User Guide**

version 1  
10/12/2016

<http://ermes.dlsi.uji.es/>

## ***Tabla de contenido***

<b>1</b>	<b>How to access ERMES Regional Geoportal .....</b>	<b>3</b>
<b>2</b>	<b>Creating an account.....</b>	<b>4</b>
<b>3</b>	<b>Logging in.....</b>	<b>6</b>
<b>4</b>	<b>Initial screen of the Regional Geoportal .....</b>	<b>7</b>
<b>5</b>	<b>Monitoring: access and visualise data products.....</b>	<b>8</b>
<b>6</b>	<b>Monitoring: toggle legend graphic .....</b>	<b>10</b>
<b>7</b>	<b>Monitoring: Info label widget .....</b>	<b>11</b>
<b>8</b>	<b>Monitoring: Inspecting data products through temporal profile charts.....</b>	<b>12</b>
<b>9</b>	<b>Changing configuration options .....</b>	<b>13</b>
<b>10</b>	<b>Comparison: compare data products in Swipe mode .....</b>	<b>14</b>
<b>11</b>	<b>Comparison: compare data products in Split mode.....</b>	<b>16</b>
<b>12</b>	<b>Logout .....</b>	<b>18</b>

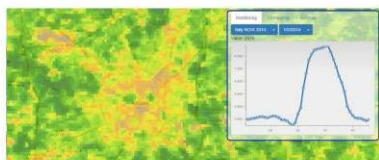
## 1 How to access *ERMES Regional Geoportal*

Type <http://ermes.dlsi.uji.es/> in the navigation bar of your favorite browser (recommended browser: Google Chrome) and click on the link “ERMES GeoPortal”



ERMES - Prototypes.

### ERMES GeoPortal.



### ERMES SmartAPP.



### ERMES SmartAPP. Native APP.



[UJI Team](#)

Figure 1 ERMES Geoportals entry web site

## 2 Creating an account

To create an account, click on the “Create account” link. (Figure 2)

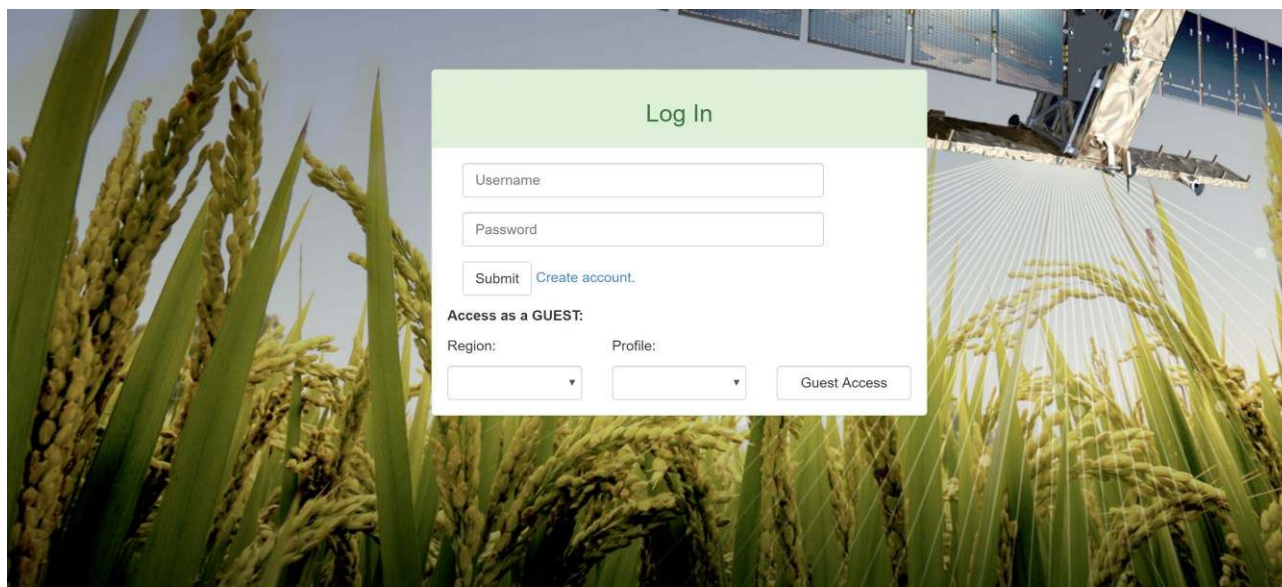


Figure 2 ERMES Geoportals welcome screen

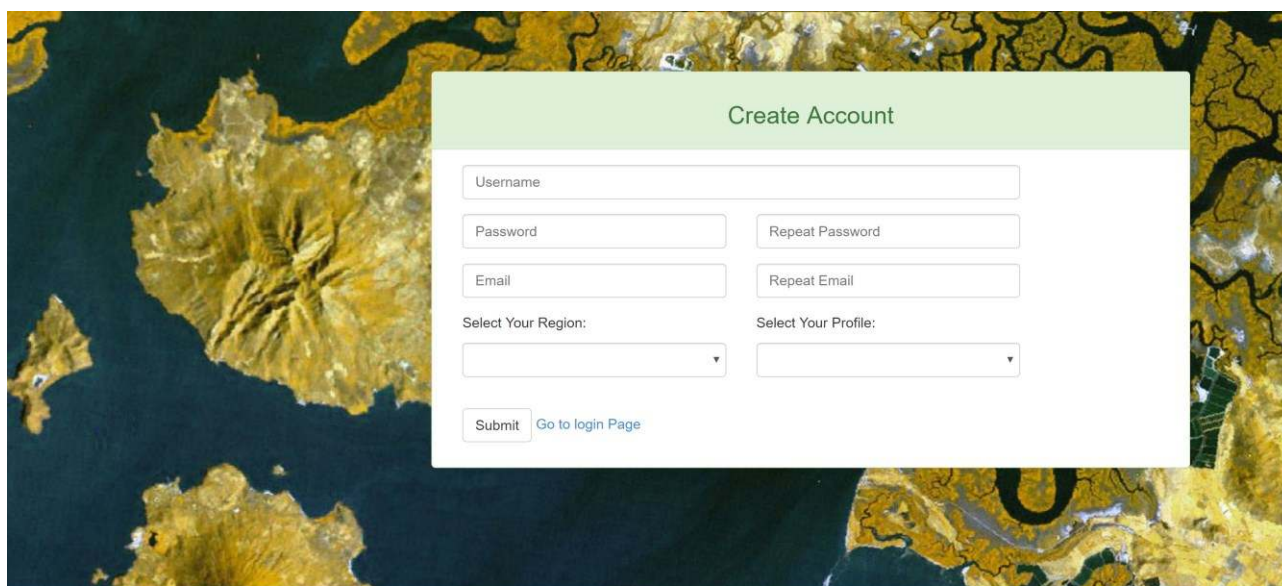


Figure 3 Signing up

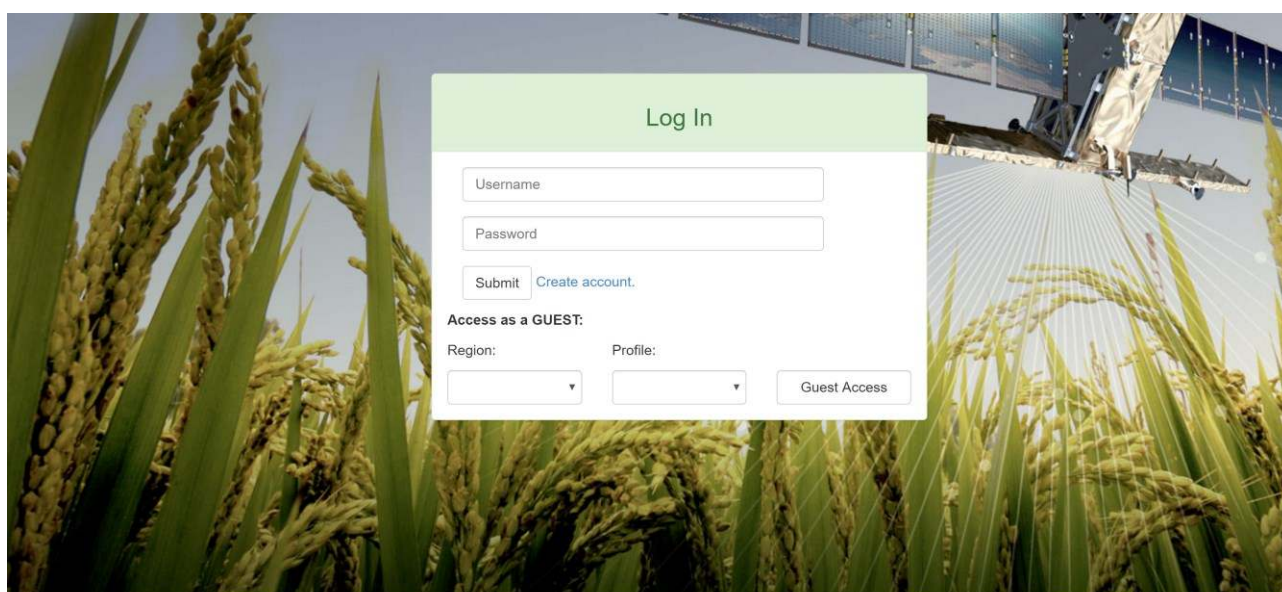
In Figure 3:

- Enter your name and surname.
- Enter a username (choose any username).
- Enter a password (choose any password).
- Enter your email address. The email address needs to be valid; we will send an account activation link to this email address.
- Select the area of your interest (Greece, Spain, Italy).
- Select your profile (Regional, Local).

Once all fields are filled in, click “Submit”. Your account needs to be activated. You will receive an email once your account is activated. Go back to the login screen (Figure 2) by clicking on “Go to login page” to enter your user credentials.

### 3 Logging in

Once again in the login screen (Figure 4), enter your username and password and click “Submit”. Guest access without validated user credentials is also allowed for demonstration purpose only. Guest users do not have access to the full range of data products and features of the Geoportal. Select the region of interest (Greece, Spain, Italy, Gambia, Senegal) and profile (Regional, Local), and click “Guest Access”



The screenshot shows a login interface overlaid on a background image of rice plants and a satellite. The interface has a green header with the text "Log In". Below this, there are two input fields: "Username" and "Password". To the right of the "Password" field is a "Submit" button. Below the "Submit" button is a link that says "Create account.". Underneath these fields, there is a section titled "Access as a GUEST:". This section contains two dropdown menus: "Region:" and "Profile:". To the right of these dropdowns is a button labeled "Guest Access".

Figure 4 Logging in



## 4 Initial screen of the Regional Geoportal

Once login-in (either as authenticated user or guest user), you are landing in the initial page of the Geoportal (Figure 5). A few icons and widgets are visible to get access to the full list of features of the Regional Geoportal.

- Eye icon (Monitoring): Utility to discover, select, visualize and inspect data products
- Two arrows icon (Comparison): Utility to compare two data products at the same time
- Lines icon (Legend): Show graphic legend of the active data product being visualized
- Gear icon (configuration): Access to configuration options.
- Scale widget at the left-bottom corner gives information about the scale of the map
- Location widget at the right-bottom corner allow to “remember” a pair of coordinates
- Zoom widget (+ and - symbols) at the top-right corner allows to zoom in and zoom out.
- Info label widget (not represented in Figure 5). When a data product is visible, a label below the Location widget is displayed containing basic information about the current selection.



**Figure 5 Initial screen of the Regional Geoportal**

## 5 Monitoring: access and visualise data products

After clicking on the “eye icon” (Figure 5), a pop-up window is prompted (left part of Figure 6). The blue selectors allow you to select a season year and a data product available for that year.

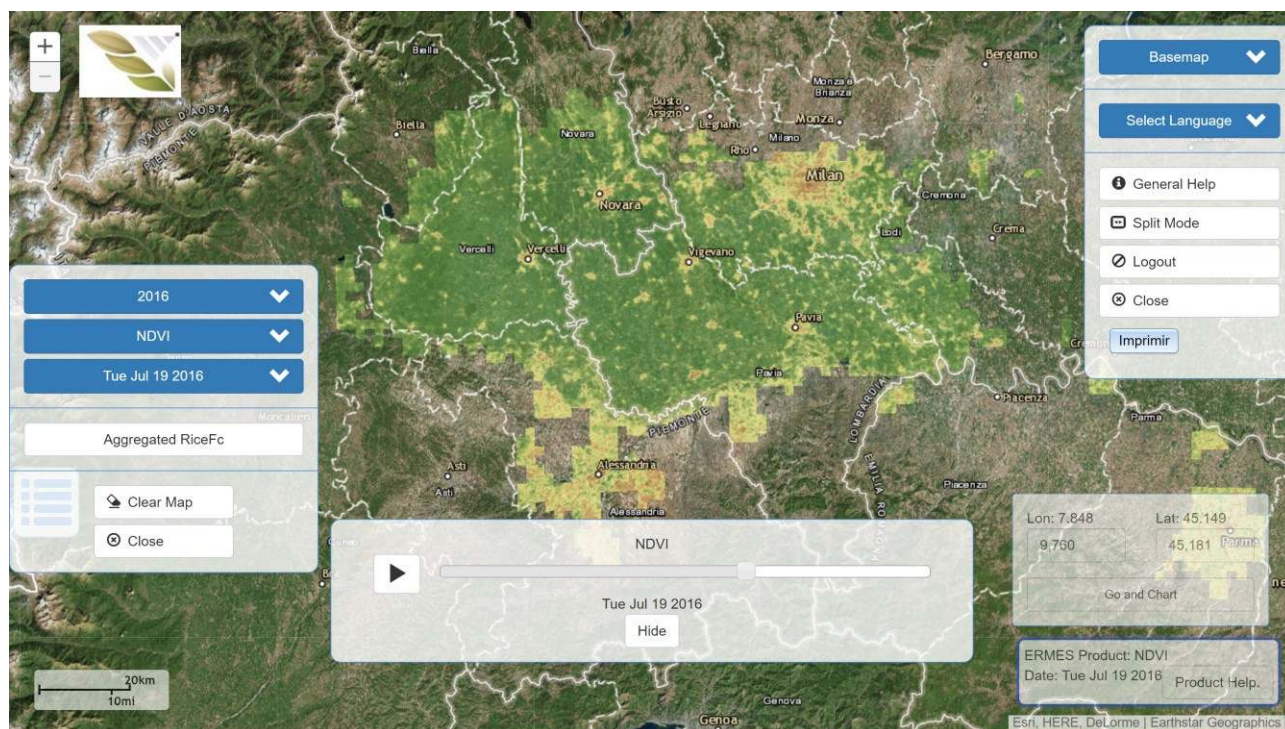


**Figure 6 Monitoring: Access to data products**

Once you choose the year and a data product, three actions are triggered:

- 1/ the first map (raster image) of the time-series data product is visualized on the map, becoming the active data products;
- 2/ and a new blue selector (date selector) becomes visible (Figure 7), so you can visualize a map of the data product in that particular date; and
- 3/ alternatively to 2/, a time slide widget appears in the bottom of the main screen to help you browse and select along a temporal axis any map of the series (Figure 7).

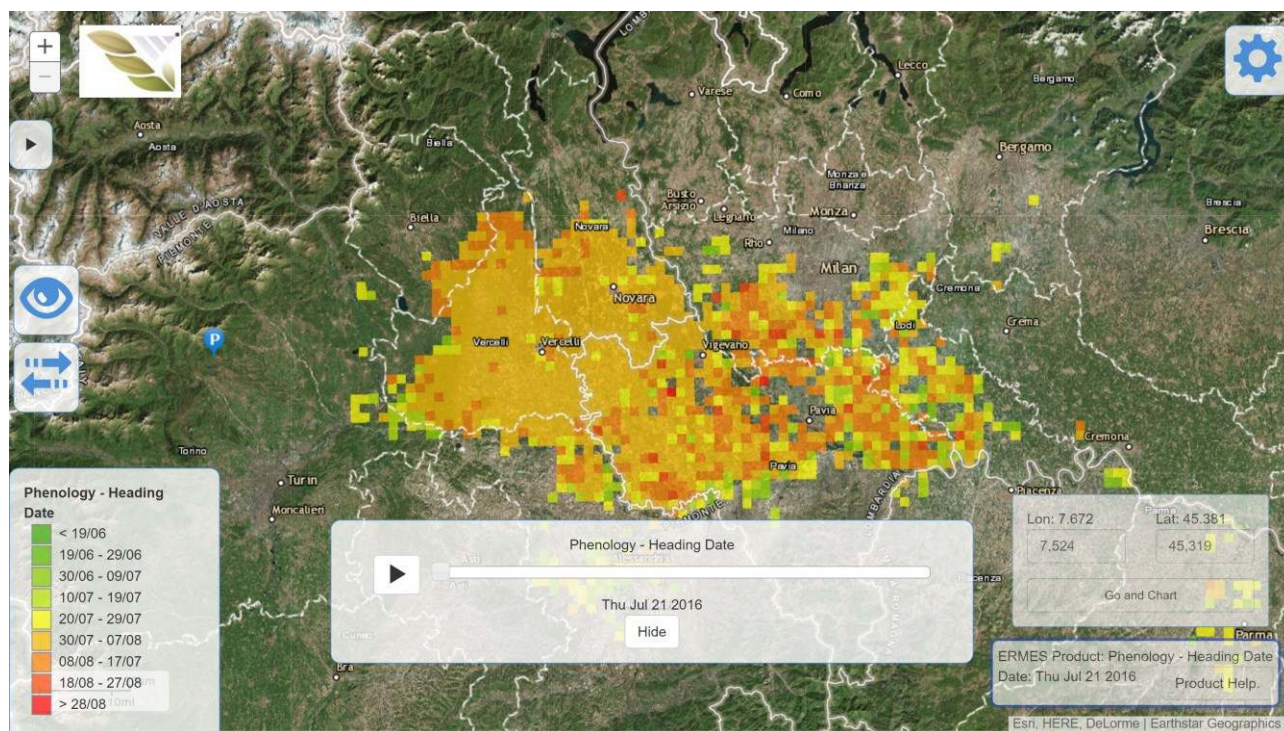




**Figure 7 Monitoring: selecting a map of a time-series data product given a date**

## 6 Monitoring: toggle legend graphic

Click on the “Lines” icon situated in the bottom-left part of the main screen to make the legend graphic of the active data product visible (Figure 8). Click on Close button to hide it.

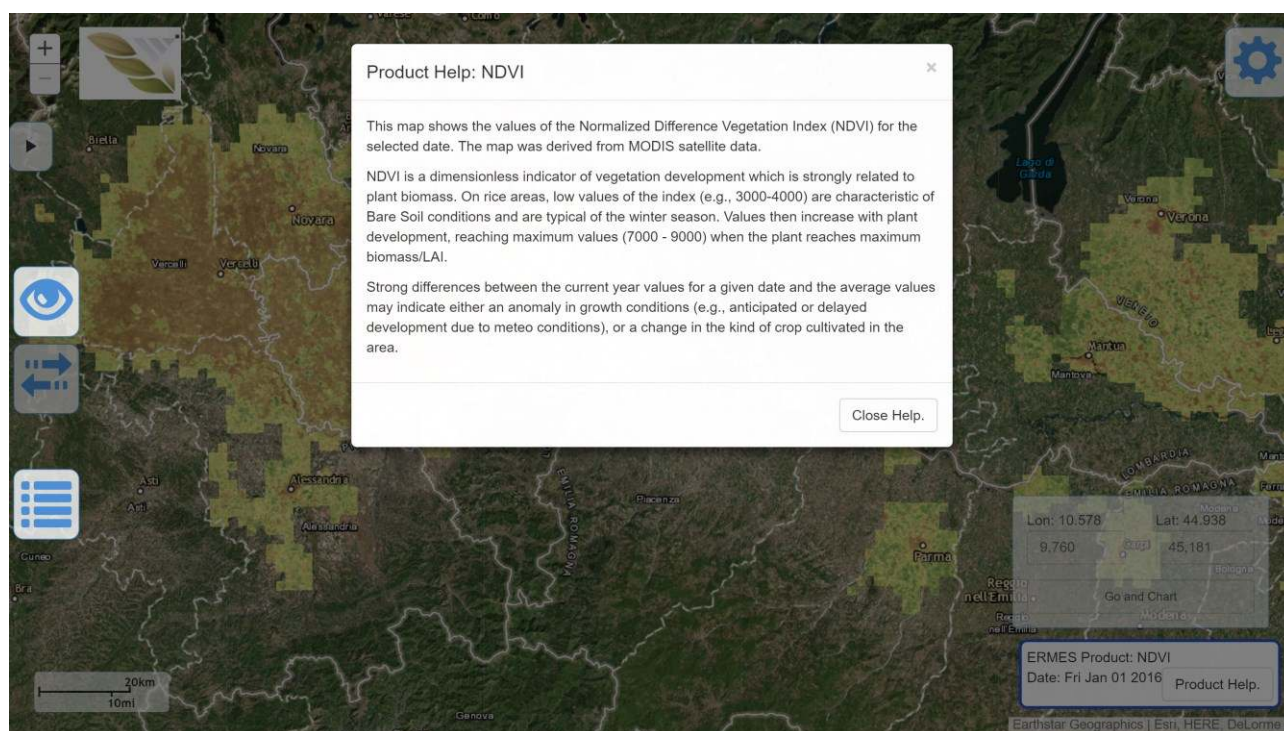


**Figure 8 Monitoring: toggle legend graphic**



## 7 Monitoring: Info label widget

When there is an active data product, an info label is displayed at the bottom-right corner of the screen showing basic information (product name, date) of the current solution. Click the “Product Help” option to show up a window help with a brief explanation of the product (Figure 9).



**Figure 9 Monitoring: Info label widget**

## 8 Monitoring: Inspecting data products through temporal profile charts

By clicking on any location (pixel) of an active data product, a line chart pops up showing the temporal profile of the parameter of the data products (Figure 10). The chart is composed of two synchronized charts. The top chart shows the data series of the temporal profile; the number and meaning of data series may vary depending on the data product in question. The bottom chart is interactive through a temporal brush (both edges of the charts), which is a kind of scroll-bar for the temporal dimension, to narrow or enlarge the data series of the top chart.

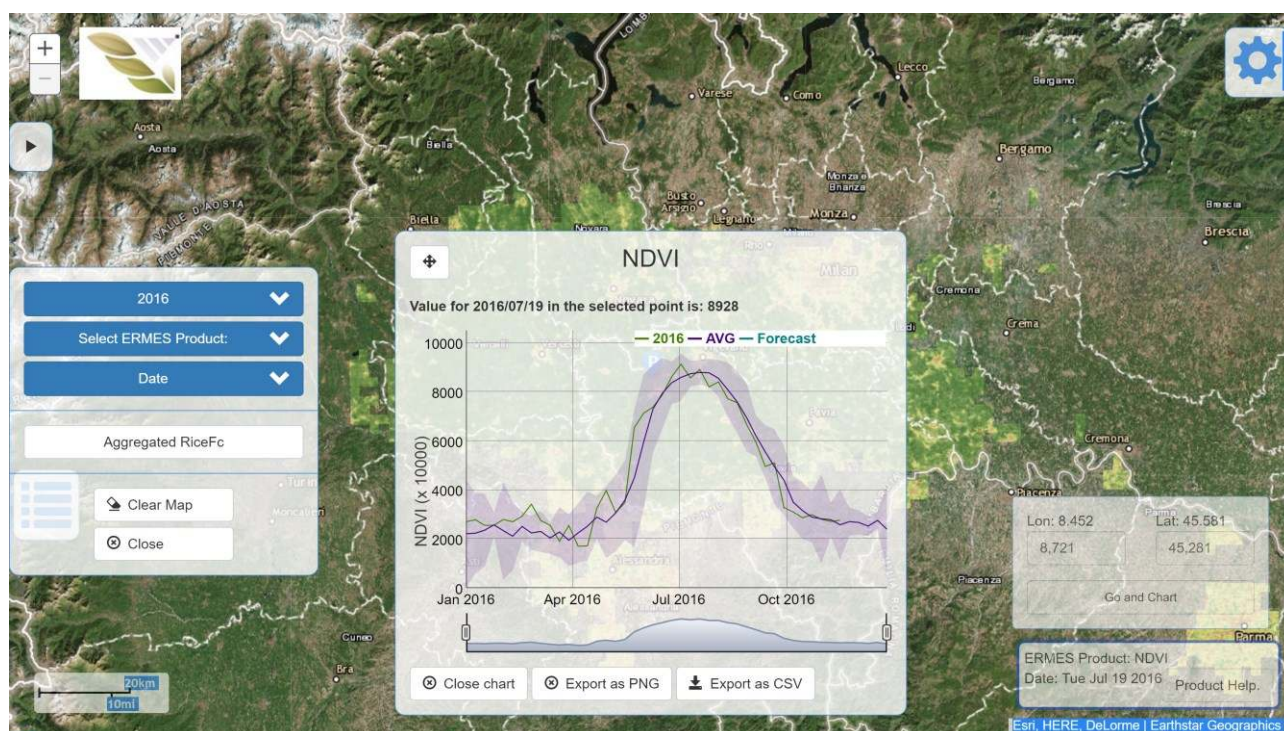


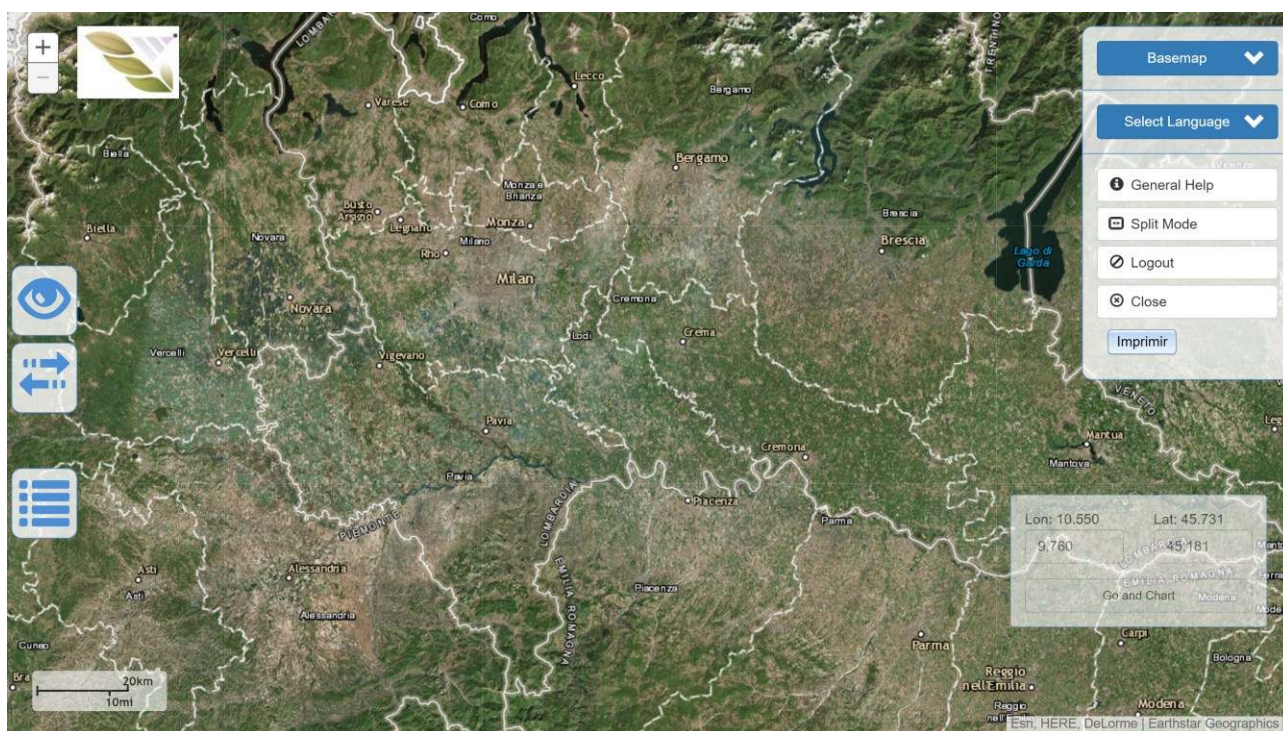
Figure 10 Monitoring: temporal profile charts



## 9 Changing configuration options

By clicking on the “Gear” icon situated at the top-left corner, you can change some configuration options and access to extra features (Figure 11):

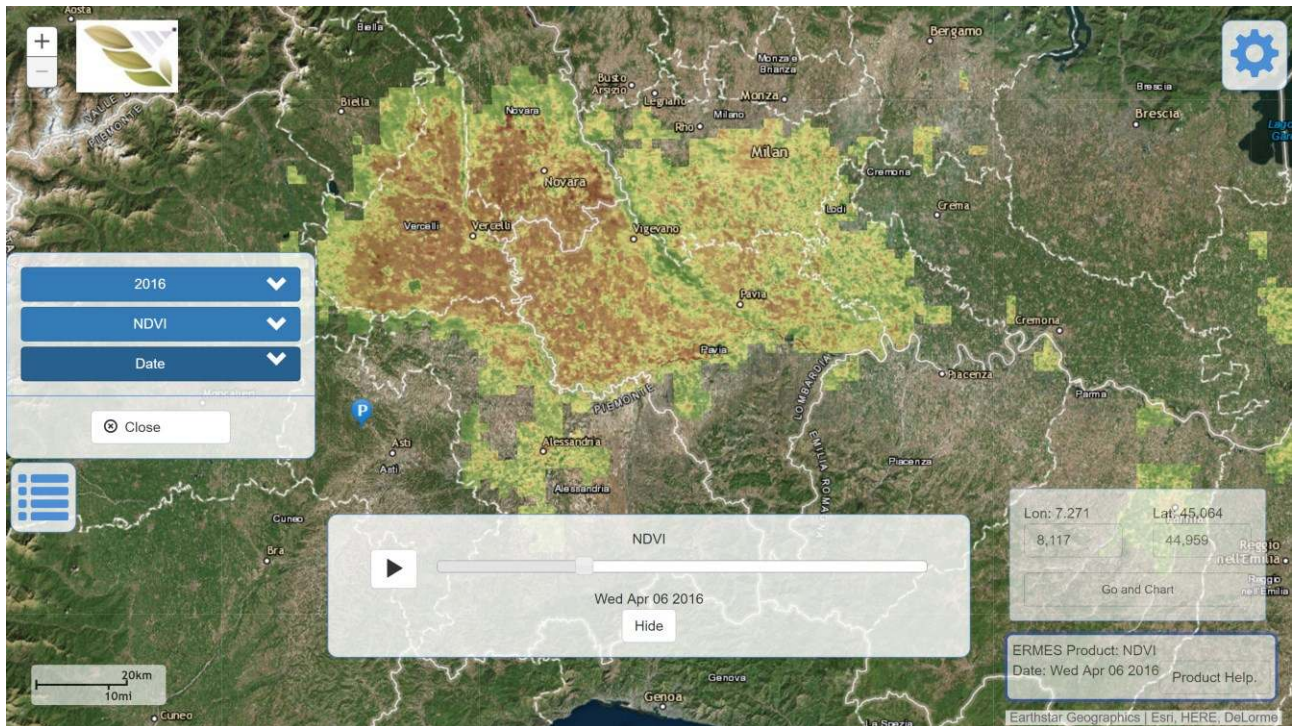
- Basemaps: change base maps section (Streets, Satellite, Hybrid, Topo, Gray, Oceans, National-geographic, OSM)
- Select Language: preferred language of choice (English, Spanish, Greek, Italian)
- General help: it shows help information on the data product and basic features of the Geoportal
- Split Mode: An alternative to Swipe mode to compare data product (see later)
- Logout: to exit the geoportal
- Close: close the configuration window



**Figure 11 Configuration options and extra features**

## 10 Comparison: compare data products in Swipe mode

The active data product can be compared with another data product or map by using the “Two arrows” icon situated in the left part of the main screen. Click it and a window with three blue selectors pops up to allow you to identify a second data product (Figure 12). Select a year, data product, and date.



**Figure 12 Comparison in Swipe mode (1)**

Only when all three parameters (blue selectors) are selected, a “Compare” button makes visible (Figure 13). Click it to load the second data product: the resulting map overlaps the two data products. You can make on data product more visible by moving a vertical bar (Figure 13).



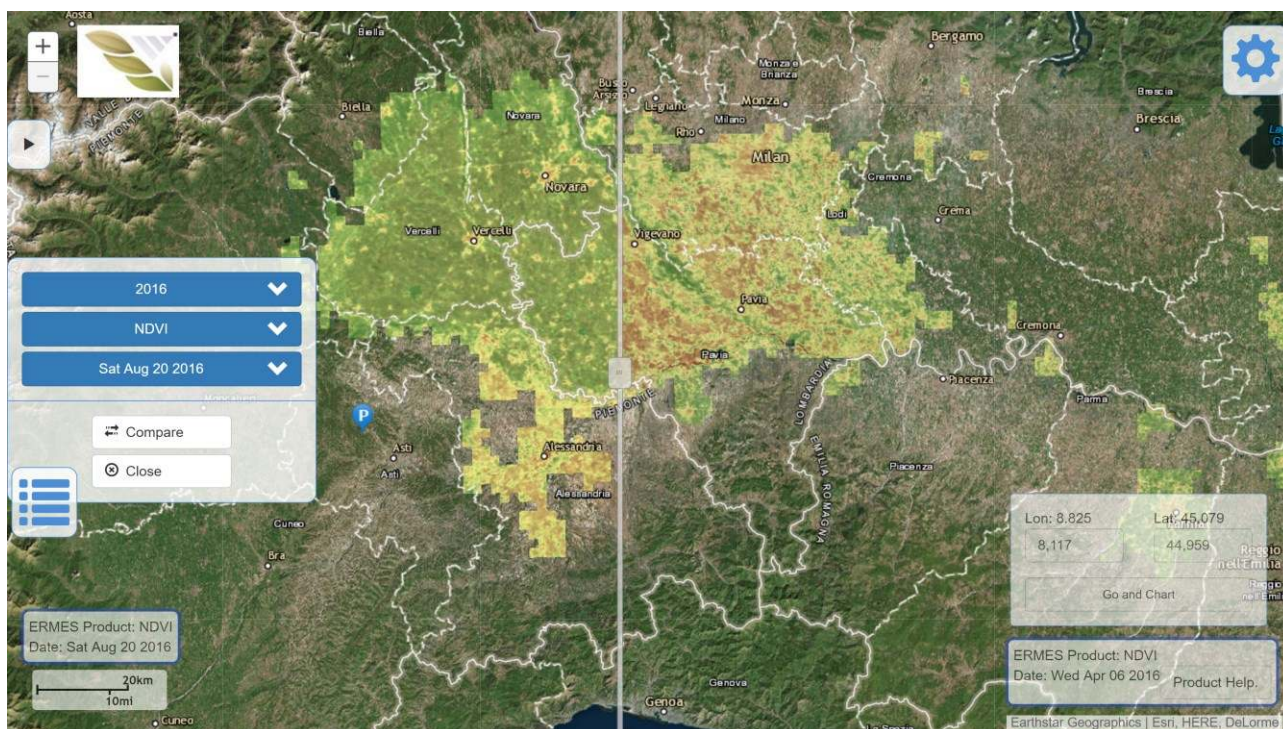


Figure 13 Comparison in Swipe mode (2)

## 11 Comparison: compare data products in Split mode

An alternative way to comparison in Swipe mode is the Split mode. Click on the “Gear” icon, and the “Split Mode” option (Figure 14). This action splits the screen in two part and launches a second instance of the geoportal (Figure 15). This way, you can interact with each instance independently.



Figure 14 Comparison in Split mode (1)



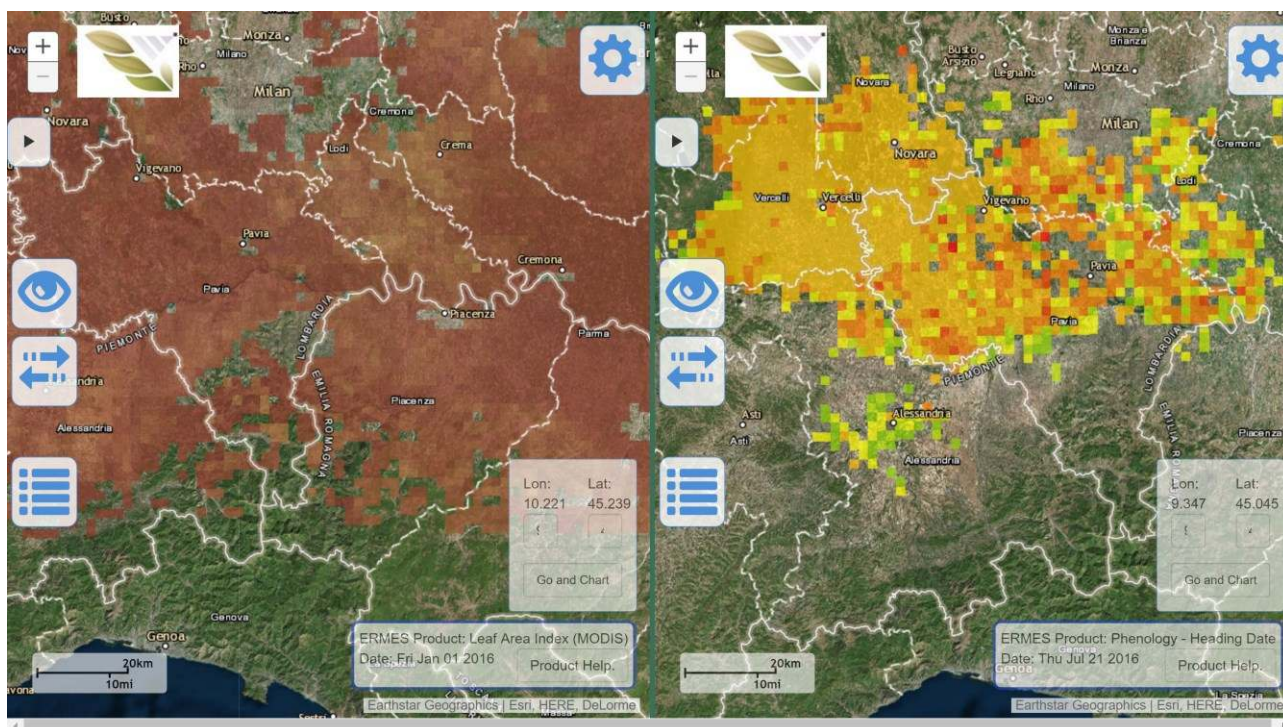


Figure 15 Comparison in Split mode (2)

## 12 Logout

Click on the “Gear” button and then select “Logout” (Figure 16).

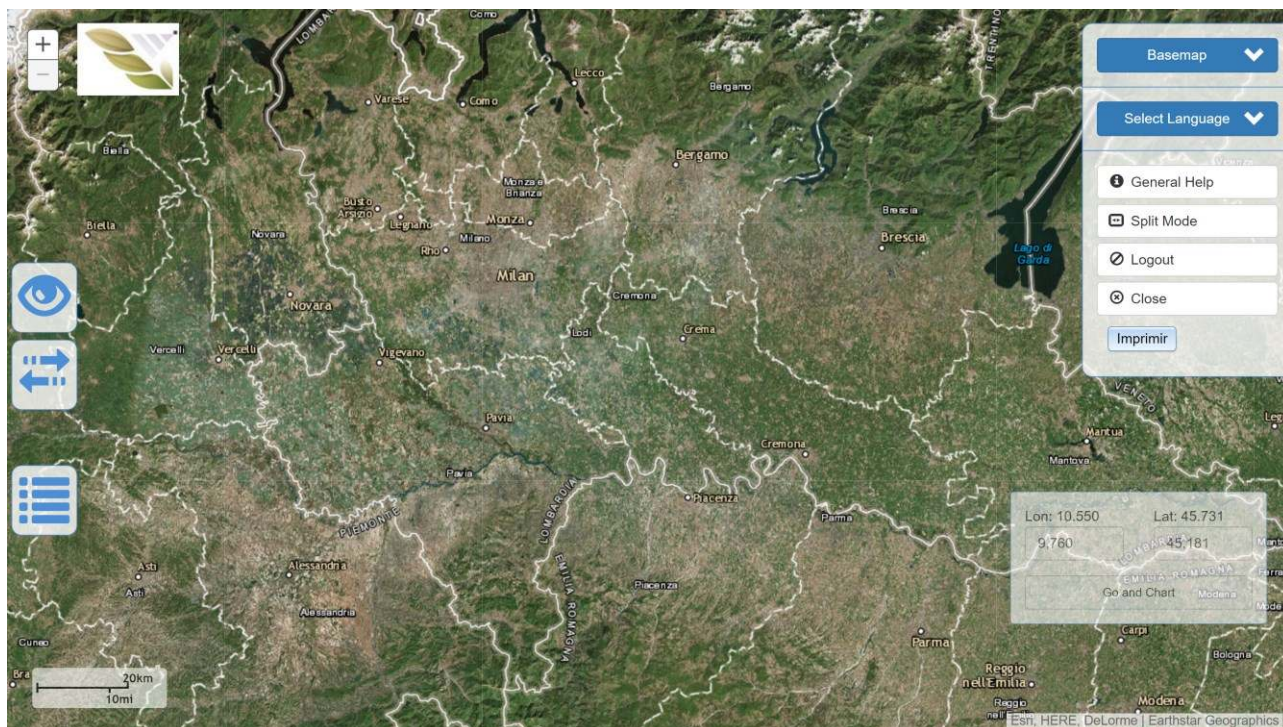


Figure 16 Logout